

STANDARD FEATURES

EXTERIOR

- Hydraulic Leveling System
- RotoFlex Pin Box
- Power Awning w/ Light Strip
- Entry Door w/ Tinted Window w/ Friction Hinge
- Large Stainless Steel Fold-out Grab Handle
- Fold-out Adjustable Step
- Cableless Rear Ramp Door w/ Non-slip Tread
- Large Exterior Pass-through Storage
- Fuel Filling Station
- Loading Lights at Ramp Door
- RVIA Seal

TIRES/WHEELS

- Spare Tire on Steel Wheel
- Hide-A-Spare - EZ Access

INTERIOR

- 8' Minimum Interior Height
- Fiberglass Batten Insulation in Attic (R-11)
- Blackout Roller Shades
- (1) Dinette w/ Benches (Sleeper)
- (1) Sofa (Sleeper)
- All Aluminum Cabinets & Drawers Throughout (No Wood)

ELECTRICAL

- Energy Package 1000 (200 Watt Solar Panel, 1000 Watt Inverter, 30 Amp MPPT Charge Controller, 100 Amp Hours of Battery, Second Battery Prep)
- Generator Prep
- High Definition 120v Smart TV
- TV Prep in Bedroom
- TV Prep Exterior
- HD Digital TV Antenna w/ WiFi Prep
- Stereo AM/FM/Bluetooth w/ Interior & Exterior Speakers
- Touchscreen User Control Panel
- Back-up Camera Prep
- 120v USB Power Outlets Throughout

PLUMBING

- DSI LP Gas/Electric Water Heater
- Ducted LP Furnace
- 12v Water Pump w/ Winterizing Tap
- City Water Hook-up w/ Fill
- 20' Sewer Hose w/ Storage Tube
- Waste (Black) Tank Flush
- Exterior Water Spigot

KITCHEN

- Convection Microwave
- Farmhouse Single Bowl Stainless Steel Sink
- Sink Insert 1/2 Solid Surface, 1/2 Stainless Steel Grate
- Matte Black Faucet w/ Pull-out Sprayer
- 12v Refrigerator
- 3-Burner Cooktop w/ Oven
- Decorative Backsplash

BATHROOM

- Porcelain Toilet
- 1-Piece Fiberglass Shower w/ Extend-A-Shower Curtain
- Single Lever Shower Sprayer w/ Shutoff
- Residential Size Medicine Cabinet w/ Mirror Doors
- Stainless Steel Sink
- Matte Black Metal Faucet
- Decorative Backsplash

BEDROOM

- 60" x 80" Residential Queen Bed w/ Storage
- Decorative Reading Lamps
- Full Length Mirror on Door
- Washer Prep

ABOVE & BEYOND PACKAGE (Included)

- Full Perimeter Welded Aluminum Frame (6 Sides Welded Together, No Mechanical Fasteners)
- Axles - Torsion, EZ Lube, w/ Self-Adjusting Brakes
- 1-Piece Aluminum Roof
- 4,000 lb Rated Ramp Door
- Low Angle Ramp for Easier Loading
- Extruded Aluminum Floor - Garage & Kitchen w/ Removable Woven Vinyl Fitted Floor Covering
- Composite Flooring in Bed, Bath, Hall w/ Woven Vinyl Floor Covering (No Wood)
- Dimmable Ceiling Lights Throughout
- Composite Wall Panels (No Wood)
- Residential Solid Surface Countertops
- 50 Amp Distribution Panel - 120v Output w/ 12v Converter
- 50 Amp Shore Cord & Motorbase Plug
- Heated Lithium Battery

ALL WEATHER PROTECTION PACKAGE (Included)

- Enclosed Underbelly w/ Radiant Barrier
- 12V Heat Pads on Water and Waste Tanks
- 12V Heat Pads on Water Lines Under Floor
- Ducted Air Conditioning
- Ducted Furnace

700 SERIES PACKAGE (Included)

- Happijac Bed- Residential Queen, w/Ladder
- Aluminum Exterior - Choice of: Silver, White, Charcoal, Pewter, or Black
- 12v Roof Vents w/ Remote and Built-in
- Low Profile Rain Guard
- Black Exterior Trim
- Frameless Dual Pane Tinted Windows
- (2) Scene Lights (Curb Side)
- Interior Wall Color - Choice of: Beige or Gray
- Cabinets - Choice of: Silver, White, Charcoal, Pewter, or Black
- Countertops - Venato Sparkle
- Upgraded E.P.S. Wall Insulation (R-7)
- Airline Track Tie Down System - Recessed in Floor
- Configurable Furniture Track System for Dinettes, Sofas, Tables

- (Ability to Change Floorplan)
- Adjustable Shelving in Cabinets (Where Applicable)
- Goodyear Tires on Premium Aluminum Wheels
- Skirting (Ground Effects)
- Skid Plates
- Second Fuel Tank, Isolated (N/A 3619)

700 SERIES OPTIONAL UPGRADES

- Dinette w/ 4 Folding Chairs (IPO Sleeper Benches)
- King Bed (IPO queen)
- Instant Water Heater - LP (IPO 10gal Gas/Electric)
- Energy Package 2000 (400 Watts Solar, 2000 Watt Inverter, 30 Amp MPPT Charge Controller, 200 Amp Hours Heated Lithium Battery – IPO 1000)
- Energy Package 3000 (800 Watts Solar, 3000 Watt Inverter, 60 Amp Charge Controller, 540 Amp Hours Heated Lithium Battery – IPO 1000)
- Slideout – Bedroom Window Seat (N/A 4319)

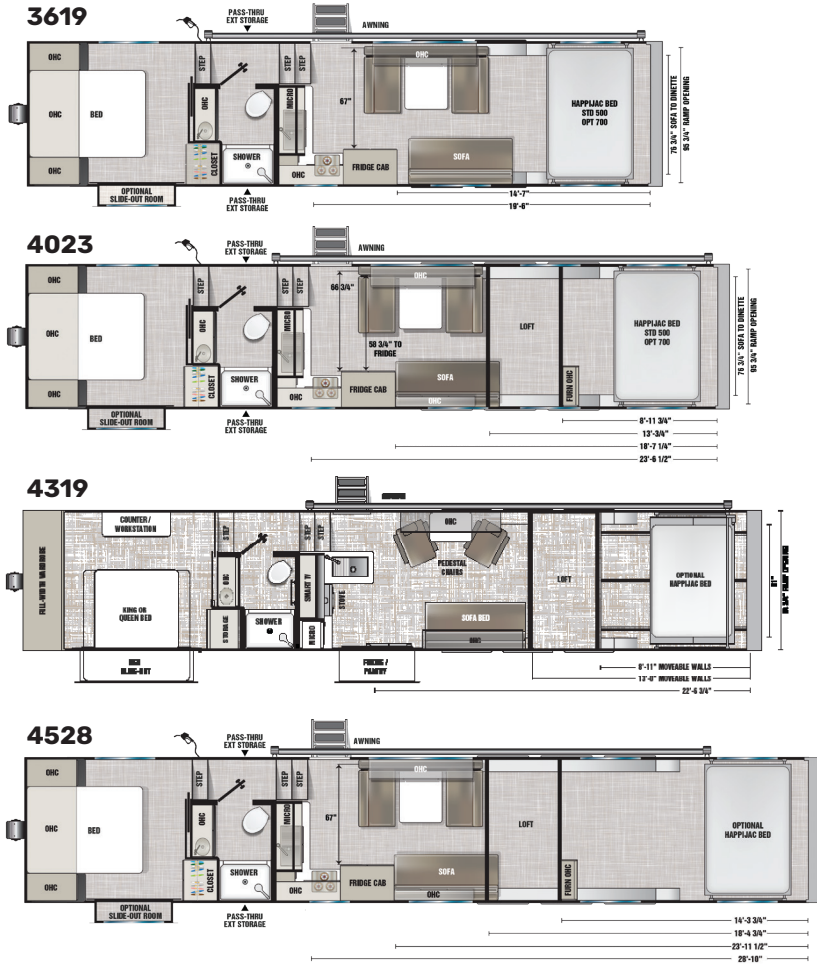
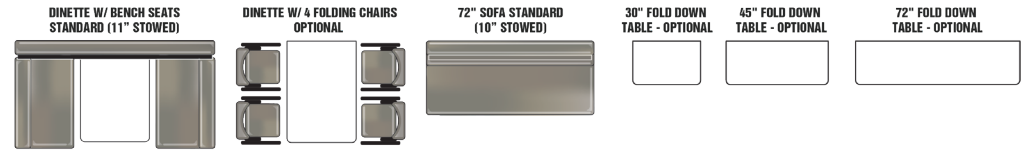
700 SERIES OPTIONAL ADDS

- Deck Package (Railing w/ Steps, Vinyl Roll-up Screen Wall at Rear) (N/A w/ 3-Season Room)
- Enclosed 3-Season Patio Room w/ Steps (N/A w/ Deck Package)
- Vinyl Roll-Up w/ Windows & Screens at Rear
- Slider Tray in Pass-through Storage
- Ladder (To Roof)
- Power Awning w/ Scene Lights Road Side
- Exterior Shower
- Happijac Sofa Beds (Under Queen Bed)
- 30", 45", or 72" Fold Down Table (Fits in Furniture Track System)
- Additional 6' Sleeper Sofa(s)
- Pedestal Chair(s) Recline & Swivel
- Overhead Cabinet(s) in Garage
- Single Or Triple Stud Tie Downs for Airline Track
- TV in Bedroom
- TV in Garage, Rear Side of Loft
- 7.0kw Generator
- Battery(s) - Heated Lithium 100 Amp Hour
- Back-up Camera
- Cell Signal Booster
- Winterization (Mandatory Oct.1- Apr.1)
- Washington State Certification (Mandatory for Washington Dealers)
- CSA Certification (Mandatory for Canada Dealers)



PLA 4023

Items below can be moved anywhere in the 700 Series garage area



MODEL	3619	4023	4319	4528
Exterior Length (Includes hitch)	37' 3"	41' 3"	44' 9"	46' 3"
Exterior Height (Includes A/C)	13' 5"	13' 5"	13' 5"	13' 5"
Exterior Width	8' 6"	8' 6"	8' 6"	8' 6"
Rear Opening Width	96"	96"	96"	96"
Rear Opening Height	90"	90"	90"	90"
GVWR	16,800 lbs	21,000 lbs	21,000 lbs	21,000 lbs
Estimated Base Model Weight	10,000 lbs	11,250 lbs	13,750 lbs	13,000 lbs
Estimated Hitch Weight w/o Gen	2,750 lbs	3,000 lbs	3,300 lbs	3,500 lbs
Estimated Hitch Weight w/ Gen	3,050 lbs	3,300 lbs	3,600 lbs	3,800 lbs
Estimated Carry Capacity	6,800 lbs	9,750 lbs	7,250 lbs	8,000 lbs
Axle Size	2 x 7,000 lbs	3 x 6,000 lbs	3 x 6,000 lbs	3 x 6,000 lbs
Tire Size	235/80R16G	235/80R16G	235/80R16G	235/80R16G
Fresh Water Capacity	200 gal	200 gal	200 gal	200 gal
Gray Water Capacity	90 gal	90 gal	90 gal	90 gal
Waste Water Capacity	45 gal	45 gal	45 gal	45 gal
Water Heater LP Gas/Electric	10 gal	10 gal	10 gal	10 gal
Gasoline Capacity	36 gal	72 gal	72 gal	72 gal
LP Capacity	60 lbs	60 lbs	60 lbs	60 lbs
Refrigerator	15 cu ft	15 cu ft	15 cu ft	15 cu ft
Cooktop/Stove	3-Burner Gas w/ Oven	3-Burner Gas w/ Oven	3-Burner Gas w/ Oven	3-Burner Gas w/ Oven
Furnace	35,000 BTU	35,000 & 25,000 BTU	35,000 & 25,000 BTU	35,000 & 25,000 BTU
Awning	25 ft	25 ft	25 ft	25 ft

The depictions of trailers in this brochure are for general information purposes only as to the trailers manufactured by ATC during the current model year. Since we continually strive to improve our products, actual products may differ and prices and specifications are subject to change without notice. Product information, specifications, photography, and promotions in this brochure may contain some features that are optional on your trailer. All capacities are approximate and dimensions are nominal. Trailer availability may be limited. ©2023 ATC 2023-07-27